

Potwin Post

FEBRUARY 2025

From Death to Life—Libby Adams

It is Winter in Kansas. I have lived in this state for most of my life and you would think that the weather would not surprise me, but on Jan 4th into the morning of the 5th we had a snow storm that was the third largest here in recorded history for that date. These are records that go back to the 1800s. 14 inches of snow with a half inch of ice beneath it is nothing to sneeze at. This is the kind of weather that stops everything; no schools, no church, no meetings to attend to; a death of our normal life under a heavy blanket of glistening white. The people who were called upon to step out into the face of all of that white and into serious danger were the police, the firemen, the road crews, the medical staff as a whole all ready to step into crisis mode as the storm progressed and as it finished leaving in its wake a threat. Driving was impossible as was walking and there was no where to walk or drive to as everything was closed. The thing on everyone's mind was survival. And all plans for activities, no matter what they were, died with the blanket of white that was so thick and heavy that it suppressed every thought of anything else. For a few days the snow was what directed everyone's thoughts and efforts. People that could get out of their driveways and streets were helping others that could not get out or those who had gotten stuck trying to get out. People were checking on their neighbors and making sure they were safe and that they had provisions. People were volunteering to help staff local emergency shelters for the un-housed. We, the citizens of our neighborhood, put aside all of our differences and worked together to take care of each other. We put aside politics, and prejudices, and religious differences to work on the problem at hand; survival. And that is the unexpected gift that this large snowfall brought us. A time out. A time to step out of our busy day to day world and see what is in front of us.

TABLE OF CONTENTS

Message from Libby A.	1	Souperbowl Flyer	7
Treasurer's Report	2	TRM Needs List	8
February Birthdays	3	Warming Center Needs List	9
Prayer Corner	4	Kids Activity Page	10
News from Doorstep	5	Events & Announcements	11
Doorstep Needs List	6	February Calendar	12

As Christ followers we sometimes struggle with identifying what needs we are being called to minister to. Is it hunger, is it poverty, is it child safety, is it after-school homework and child care, is it book study, is it prayer and worship; what is God calling us to do, how is He calling us to serve. In the aftermath of a huge blizzard it is easy to see the needs and identify them, and it is also easier to make those needs a priority as all other things we would normally be doing have stopped. But what if we took the time to put ourselves on a time out. What if we put ourselves on a time out to step out of our normal everyday busy lives to intentionally seek God's guidance, to truly listen. Psalm 46:10 invites us to "Be still and know that I am God". This short passage is so full of meaning for us today. Why, because when are we ever still, except in our sleep. We are busy doing, worrying, planning, creating, building, socializing. Can we even be still. I know we can if we try, but even that trying requires self discipline and divine assistance. But the rewards we can reap. By giving ourselves a timeout, a time with God; we can maybe find the answers not only to where God is leading us as individuals but also corporately as to where God is leading us as a congregation of faith.

Sometimes we get a timeout in life like a 14 inch snowfall and it becomes a blessing in that it gives us a reminder of what is really important in our lives. Sometimes, like our Christian brothers and sisters in California we get a horrible disaster, but in the midst of it we are reminded not of our differences but of how alike we all are. God is present in the midst of the storms and troubles of our lives but he is also present in our everyday, hum drum existence if we seek Him and His guidance. May we be ever seeking, being still to listen for His voice.....

Shalom

TREASURER'S REPORT

Thank you for your generous contributions to Midtown Community Services in the month of January.

TREASURER'S REPORT FOR DECEMBER

BALANCE 12/1/24	\$ 8,227.63
Dec. Receipts	\$ 12,654.51
Dec. Disbursements	\$ 6,901.11
BALANCE 12/31/24	\$ 13,981.03
RESERVE ACCOUNTS	\$ 24,654.93

If you have not turned in your 2025 Potwin Pledge Letter, please return it to the church as soon as possible. There are blank pledge letters available in the church office if you need a copy. Many thanks for your continued support and generosity.

FINANCIAL NEWS—The following amounts were received in 2024 from our Loose Coin Offerings:

Jan.—Midtown Community Services	\$187.13
Feb./Easter/July—Doorstep	\$389.93
March—Heartland Presbyterian	\$242.10
April—One Great Hour of Sharing	\$197.61
June—Pentecost	\$182.23
August—Back to School Drive	\$209.19
Sept.—Helping Hands	\$210.41
Oct.—Peace & Global Witness	\$180.77
May/Nov.—Topeka Rescue Mission	\$455.70
December—Christmas Joy	\$194.91

Many thanks for your continued generosity towards our Loose Coin Offerings each month.

Potwin Presbyterian Church

400 SW Washburn Avenue
Topeka, KS 66606
(785) 235-1311

Find us on Facebook or visit online at
www.potwinpres.org

(Vacant), Pastor
Libby Adams, Pastoral Assistant
Gwen Jones, Music Director
Angela Juarez, Office Assistant

Session:

Rev. K.O. Noonoo, Moderator

<u>2025</u>	<u>2026</u>	<u>2027</u>
Cameron Charity	Bob Harrison	Gwen Jones
Linda Tuller	Libby Adams	Jordan Nutter
Joyce Black		
Vacant—Youth Elder (1 year term)		

Clerk of Session: Gwen Jones
Treasurer: Linda Tuller
Financial Secretary: Erica Marshall
Building Coordinator: Pat Abbey

Personnel:

Cameron Charity

Sunday School Team—Contact Church Office
Adult Bible Study—Contact Church Office
PNK Youth Representative—Contact Church Office



Jay Gideon	2nd
Elizabeth Fincham	7th
Amanda Harvey	8th
Lucas Harvey	8th
Anna Breitenstein	10th
Dawn Jackson	11th
Mike Adams	12th
Matthew Works	14th
Kim Kingery	20th
Mary Breitenstein	23rd
Debi Harvey	25th
Mark Abbey	26th
Gwen Jones	27th

Like God the Father, we celebrate the day you were born!

If we don't have you or one of your loved ones on our birthday list, and you would like to be included, please email Angela or the church and let us know.



Please pray for our at home Friends

Janet Lafferty



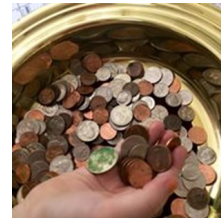
Deadline for March

Potwin Post is February 20*

Please email your submissions to Angela Juarez arp0371@gmail.com or potwinchurch@att.net.

***Any submissions received after the deadline WILL NOT be included in the next Potwin Post. No exceptions.**

Loose Coin Offering



JANUARY—Doorstep

Doorstep is an agency in Topeka that helps our neighbors survive crises, improve their way of life and become self-sufficient. Some of the many programs and services offered are:

- Money for rent
- Food and Clothing
- Transportation
- Utilities Services
- Crisis Intervention

Potwin Church has been a part of Doorstep since its inception. Please help us feed and clothe those in need through this respected agency.

PRAYER CORNER

If you have any items you would like to add to the Prayer List, please contact Pat Abbey or the church office. If a name has been removed that you would like to keep on the list, please let us know. The Prayer List will now be published in the newsletter every month. The Prayer Group will continue to meet on Thursday afternoons at approximately 3:45pm. Please contact Pat Abbey if you would like to participate in the group.

- Jon Workman, 54 years old, passed away Sunday, January 12, 2025. He had battled leukemia and had a stem-cell transplant at M.D. Anderson Hospital in Houston TX last summer. Jon joined Potwin Church on April 13, 2014, was ordained and served on the Session from 2015-2017. We grieve with his parents, Dan and Carolyn Workman, his ex-wife Angi and daughter Falan, and ask God to continue to comfort us all. Jon worked at Goodyear for 30 years.
- BJ Edmonston, Jane Sewell's nephew
- Polly, friend of Gwen Jones
- The Dickson Family
- Virginia Nelson
- Church Elders in their search for a pastor
- Patience, togetherness, and energy moving forward as we await God's choice for us in leadership
- All those dealing with tragic circumstances such as fires, storms, earthquakes, etc.
- All those mourning the loss and absence of loved ones
- Our nation and its leaders that they will be wise and compassionate, working for the good of all. May we come together by letting go of fear, anger, divisiveness, and instead embrace Christ's ways of love. May we continue working towards eliminating all forms of oppression in our society and to speak up when we see injustices.
- All those struggling with addiction, mental illness, homelessness, victims of human trafficking, etc.
- Our nation's military, police, fire and emergency personnel here and around the world. We pray especially for Brenden Chermok as he serves our country.
- Our mission partners including: Presbyterian Mission Agency, Presbyterian Disaster Assistance, Doorstep, Midtown Community Services, Topeka Rescue Mission, Heartland Camps, World Central Kitchen, Helping Hands Humane Society, Topeka Center for Peace and Justice, West Side Christian and West Side Baptist Churches.

News from Doorstep

The year 2024 felt a bit like a repeat of 2023 in many ways! The needs of our neighbors remained at an increased level. We provided 2,964 food orders in 2024, exceeding the increased number we provided in 2023. Doorstep assisted with nearly 168,000 pounds of food to feed our neighbors and spent almost \$84,500 on food purchases to keep our pantry shelves stocked to feed our neighbors in need! Our food budget in two years went from \$6,900 to \$84,500; that is an increase of over 1,100%! Doorstep applied for more grants to assist with food purchases and our supporting faith communities and individuals stepped up to donate more food, and gave money so we could buy food in bulk. At this point, we do not foresee a drastic decrease in the need for food in 2025, and our budget reflects the amount we anticipate needing to spend to feed our neighbors in need.

One way to help in the first part of 2025 is by donating towards our annual SouperBowl Sunday's collection of soup and crackers!

During the weekend of the Super Bowl (February 7th – 9th) we ask our faith communities and mission partners to collect soup, all varieties, and crackers to help stock our food shelves. A successful event will keep our pantry shelves stocked with soup for a few months, at least!

In 2024, we set a goal of 5,000 pounds, and we received over 8,400 pounds!!!! With the increased need last year, we are going to set an increased goal for this year's event...

**2025's Goal for SouperBowl Sunday weekend is...
5 tons = 10,000 pounds of soup and crackers!**

"This is a caring community made up of neighbors helping neighbors, and I know we can meet this year's goal!!!!"

Lisa Cain, Executive Director

*****Please bring your "Souperbowl Sunday" donations to Potwin Church for all of February.*****



Doorstep Needs List

Clothing Room Needs: (Gently Used, Not New)

Men's Underwear (Sizes XL-4X), Shoes & Gloves ~ All Sizes

Men's Sweatpants ~ All Sizes

Kids & Teens (Boys/Girls) – Jeans & Sweatpants ~ All Sizes

Women's Sweatpants ~ All Sizes

Blankets & Comforters ~ All Sizes

Sheet Sets ~ Twin, Queen & King

Toasters, Silverware, Hand Can Openers & Crockpots

Deodorant

Cleaning Supplies & Laundry Soap for Impact Families

Donations Accepted:

**Monday – Friday
9am – 2pm**

1119 SW 10th Ave
(10th & Buchanan)
Use the South Door

~~~~~

### Food Room Needs:

Progresso & Chunky Soups

Canned Vegetables ~ All Types

(Green Beans, Corn, Peas, Carrots)

Cream of Mushroom Soup

Chicken Noodle Soup

Ramen Noodles

Canned Beans

(Pinto, Black, Chili)

Vegetable Soup

Pork / Baked Beans

Diced Tomatoes

Applesauce

Peaches

Saltines

Egg Noodles



Doorstep's 2025

**“SOUPERBOWL  
SUNDAY” IS  
FEBRUARY 9th**



**BRING  
SOUP  
AND  
CRACKERS**



TO YOUR FAITH  
COMMUNITY  
FEBRUARY 7<sup>th</sup> – 9<sup>th</sup>

TO HELP STOCK DOORSTEP'S  
FOOD PANTRY!

\*\*\*Potwin Church, please bring donations for  
the whole month of February!\*\*\*

**Our Goal this year is 5 ton = 10,000 pounds!**

**We can beat last year's total... Let's Do It!!!**

## TOPEKA RESCUE MISSION NEEDS LIST

Donations can be brought to the Distribution Center at 401 NW Norris, Monday—Friday 8:00AM to 3:45PM. To speak with our Distribution Center, please call (785)357-4285.

**\*\*\*PLEASE SEE THE NEXT PAGE FOR AN URGENT WARMING CENTER NEEDS LIST\*\*\***

### **DISTRIBUTION CENTER NEEDS**

Meat—All Types (must be USDA certified)    Canned Proteins (tuna, chicken, sloppy joe, beans, etc.)  
Canned Fruit                      Spaghetti-O's                      Men's Underwear (M, L, XL); T-Shirts 3X-4X; Jeans 30-40  
Baby Diapers Size 5&6; Baby Toiletries (lotion, shampoo, etc.)                      Men's & Women's Deodorant  
Ibuprofen, Tylenol, Cough Drops, Tums

### **KITCHEN NEEDS**

3 compartment to-go containers                      Cutlery packs with napkin, salt, & pepper  
Snacks for Sack Lunches                      #10 cans of vegetables  
Aluminum foil pans with lids

### **MAP NEEDS**

Women's underwear size small (4-6)                      Men's underwear sizes 30-36  
Men's jeans sizes 30-36                      Sleeping bags & blankets  
Travel size deodorant, conditioner, lotion, soap, & shampoo  
*(Additional Mobile Access Partnership needs list items can be purchased on Amazon and shipped directly to TRM using the link below.)*

[www.trmonline.org/needslist](http://www.trmonline.org/needslist)

Visit the link below to purchase items from the TRM Amazon Wish List.

[https://www.amazon.com/hz/wishlist/ls/O6BQ8QXTPLGA/ref=hz\\_ls\\_biz\\_ex](https://www.amazon.com/hz/wishlist/ls/O6BQ8QXTPLGA/ref=hz_ls_biz_ex)



**TRM**  
**MINISTRIES**





# URGENT NEEDS

## TOPEKA WARMING CENTERS

Please help us take care of our neighbors! The warming shelters are in urgent need of these items:

- Bottled water
- Granola bars
- Cereal bars
- Chips
- Peanut butter crackers
- Cheese crackers
- Fruit snacks
- Nuts and seeds
- String cheese
- Clementine oranges (Cuties, Halos, etc.)
- Apples
- Bananas
- Clorox wipes
- Lysol spray cleaner
- Toilet paper
- Paper towels

### Daytime donations:

Monday-Friday, 8 am - 3 pm  
TRM Distribution Center  
401 NW Norris

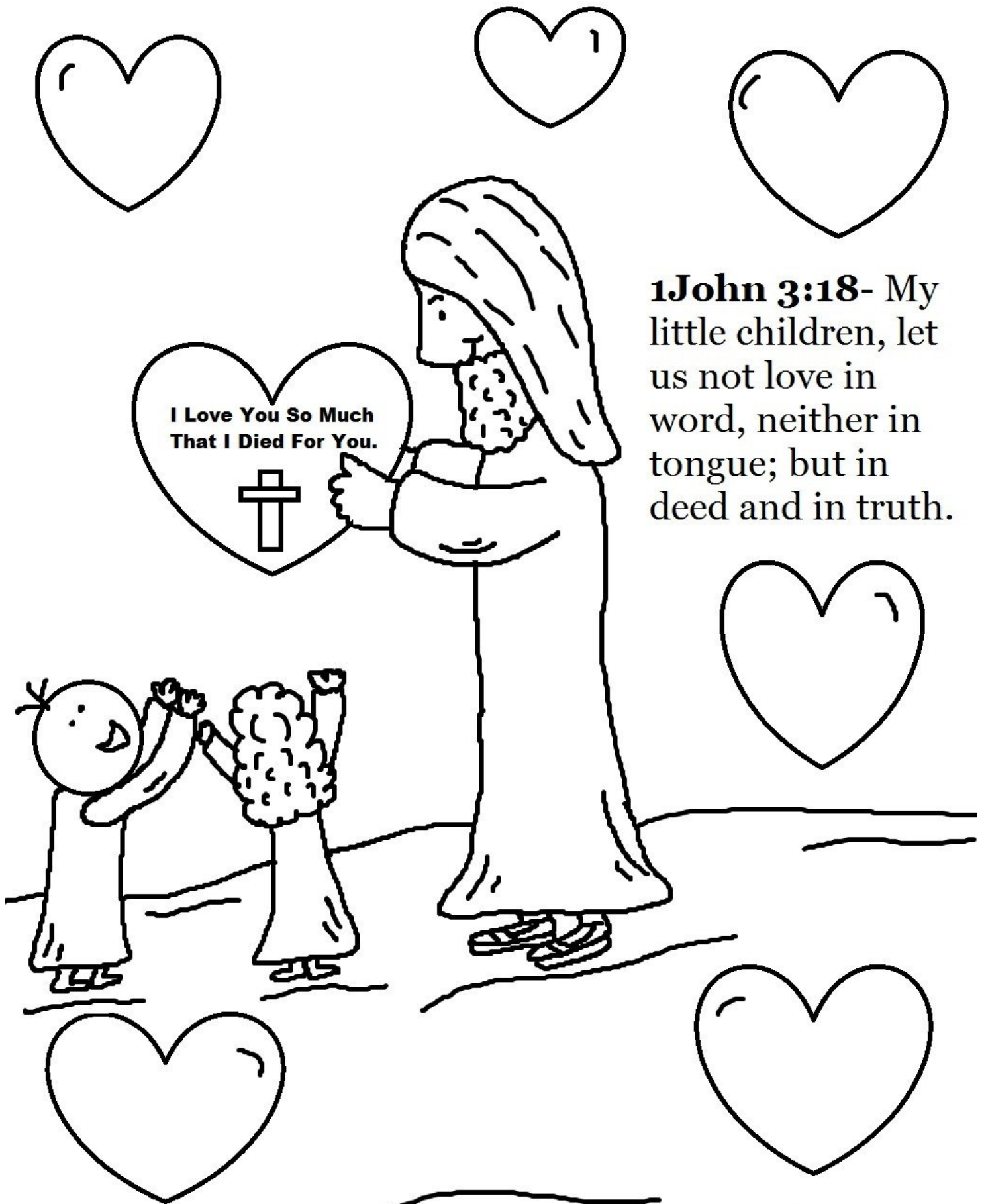
### After hours donations:

Weekdays after 3:30pm, weekends  
TRM Children's Palace  
601 NW Harrison



**VOLUNTEER REGISTRATION: <https://bit.ly/4fH3OjB>**





**1John 3:18-** My little children, let us not love in word, neither in tongue; but in deed and in truth.

# EVENTS & ANNOUNCEMENTS

## JOYS & GRATITUDES

We were pleased to welcome Logan DeMond as a new member in December. Logan is from Larned, KS. Before coming to Topeka, he worked for Wichita's mayor as a deputy campaign manager. He is now the legislative director for the Kansas House of Representative's Democratic leadership. An interesting connection is that Logan's government teacher in Larned was Cody Ratliff. Cody's maternal grandparents were long-time Potwin members Albert and Evelyn Boring, who lived in the Auburndale neighborhood!

On January 19<sup>th</sup>, we were joined in worship by Chuck Nelson, his friend Ann from Germany, and nephew Brian from Utah. Chuck is 91 years old, from Santa Monica, California. He was honored by Topeka High School on January 17<sup>th</sup>, receiving the Black & Gold Award at their Sports Hall of Honor ceremony. Chuck was a multi-sport athlete in high school and continues to play volleyball and tennis. He was on the USA Olympic Volleyball Team in 1964, which was held in Tokyo, Japan. He still plays tennis regularly. Chuck's grandfather was Rev. Harry Nelson, Potwin's longest serving pastor, who led the church from 1908 to 1942. Chuck was thrilled to see Rev. Nelson's picture still hanging in our Abbey Room. (Chuck is pictured on far left of the photo.)



## PASTORAL CARE

Please reach out to the church office or directly to Linda Tuller or Libby Adams if you or your family need pastoral care. We also have Rev Carmen Raines, a Presbyterian minister who is chaplain at Stormont-Vail, Rev. Donna Gilchrist from Westside Christian Church or Rev Ivan Greuter from Westside Baptist Church available to help with this need.

## NEWSLETTER FRONT PAGE ARTICLE

In the wake of Sue Ann's retirement, we are looking for your help in filling the front page of future Potwin Post Newsletters. If you have a message you would like to share in place of the usual "Pastor's Post" article, please email it to Angela Juarez at arp0371@gmail.com or the church office Attn: Angela Juarez at potwinchurch@att.net. To ensure your message makes it into the newsletter, please submit it no later than the 20th of the month. We look forward to hearing words of wisdom from many of you over the coming months!

## POTWIN BELLS

Our bell choir needs your talents! Rehearsal is at 6PM every Tuesday unless otherwise noted. Please contact our music director, Gwen Jones, if you have any questions. All are welcome!

## BLESSING BOX & LITTLE LIBRARY

Our Blessing Box and Little Library are being constantly refilled to meet needs in our neighborhood. Many in our neighborhood have been assisting us in this effort. Thanks to all who contribute to these local missions. Remember our blessing box when you shop as it is always in need of items.

## INCLEMENT WEATHER POLICY

If weather conditions warrant the cancellation of worship services, you will be notified via email, Facebook, and on the TV stations hopefully by 10PM Saturday evening. If weather happens overnight, it will be posted to these outlets by 7AM Sunday morning. On days that USD 501 closes school, please consider the church office to be closed as well. In those instances, if you have a need that requires immediate attention, please contact the person you need to speak with directly. Church email will still be checked regularly and phone messages will not be checked until someone returns to the office.



# February 2025



| Sun                                                                                  | Mon                                                                                                    | Tue                                                                                          | Wed                          | Thu                           | Fri                                                                                                                                         | Sat                                             |
|--------------------------------------------------------------------------------------|--------------------------------------------------------------------------------------------------------|----------------------------------------------------------------------------------------------|------------------------------|-------------------------------|---------------------------------------------------------------------------------------------------------------------------------------------|-------------------------------------------------|
| <b>Sunday Fellowship</b><br><b>9:30AM</b><br><b>Sunday Worship</b><br><b>10:00AM</b> |                                                                                                        | <b>Bell Choir 6:00PM</b><br><b>every Tuesday</b><br><b>unless otherwise</b><br><b>noted.</b> |                              |                               |                                                                                                                                             | 1                                               |
| 2                                                                                    | 3                                                                                                      | 4                                                                                            | 5                            | 6                             | 7                                                                                                                                           | 8                                               |
| Happy Birthday<br>Jay Gideon                                                         |                                                                                                        |                                                                                              |                              |                               | Happy Birthday<br>Elizabeth Fincham                                                                                                         | Happy Birthday<br>Amanda Harvey<br>Lucas Harvey |
| 9                                                                                    | 10                                                                                                     | 11                                                                                           | 12                           | 13                            | 14                                                                                                                                          | 15                                              |
|                                                                                      | Happy Birthday<br>Anna Breitenstein                                                                    | Happy Birthday<br>Dawn Jackson                                                               | Happy Birthday<br>Mike Adams |                               | Valentine's Day<br><br>Happy Birthday<br>Matthew Works |                                                 |
| 16                                                                                   | 17                                                                                                     | 18                                                                                           | 19                           | 20                            | 21                                                                                                                                          | 22                                              |
|                                                                                      | President's Day<br> |                                                                                              |                              | Happy Birthday<br>Kim Kingery |                                                                                                                                             |                                                 |
| 23                                                                                   | 24                                                                                                     | 25                                                                                           | 26                           | 27                            | 28                                                                                                                                          |                                                 |
| Happy Birthday<br>Mary Breitenstein                                                  |                                                                                                        | Happy Birthday<br>Debi Harvey                                                                | Happy Birthday<br>Mark Abbey | Happy Birthday<br>Gwen Jones  |                                                                                                                                             |                                                 |

**FEB. 2025 POTWIN POST**

**Potwin Presbyterian Church**

**400 SW Washburn Ave.**

**Topeka, KS 66606**

**(785) 235-1311**

Potwin Presbyterian Church is a safe and sacred place to worship God where Christ's love is revealed through actively and joyfully sharing, caring, and giving to others in our congregation, community, and world.

You can find us online at [www.potwinpres.org](http://www.potwinpres.org) & on Facebook at <https://www.facebook.com/PotwinChurch>.

You can reach us by email at [potwinchurch@att.net](mailto:potwinchurch@att.net)

