

# Potwin Post

Sue Ann Seel, Pastor  
**DECEMBER 2024**

## GOOD GIFTS

I can't believe that the time has come for me to write my last Potwin Post article! It seems like that this time has gone both fast and lasted a long time. In my 15 years here there have been lots of joys and some bumps in the road, but we weathered them all together, didn't we?

In fact, I would say the last 15 years have been a gift from God for all of us. It seems appropriate to think about the gifts of God during the Advent and Christmas Season as it rapidly approaches!

The other day I was looking through some of the photos I have posted on our Facebook page. Those photos show the blessings and the gifts we have shared over the years. If you are able to access those, I suggest looking them over. You too will see the blessings.

And so I would like to take this opportunity to thank you and God for the gift and blessing you all have been to me over the years. Even though we have had our moments, overall working with you all has been a delight. I have met so many awesome people, and had the privilege of sharing your joys and your sorrows. It has been an honor to serve as your pastor.

So now I am off to new fields, and someone else will come to you to share that joy.

May the Force be with us all.

Christmas blessings,

Pastor Sue Ann

### TABLE OF CONTENTS

Pastor's Post	1	News from Doorstep	7
Treasurer's Report	2	Doorstep Needs List	8
December Birthdays	3	TRM Needs List	9
Retirement Celebration	4	Kids Activity Page	10
Cookie Walk Flyer	5	Events & Announcements	11
Doorstep Christmas	6	December Calendar	12

*"Every generous act of giving, with every perfect gift, is from above, coming down from the Father of Lights, with whom there is no variation or shadow due to change.<sup>[a]</sup> 18 In fulfillment of his own purpose he gave birth to us by the word of truth, so that we would become a kind of first fruits of his creatures."*

James 1: 17-18







Angi Workman  
 Marley Abbey  
 Mark Works  
 John Works  
 Falan Workman  
 Emma Hutchison  
 Dustin Chermok  
 Sharon Bayless  
 Mary Charity

3rd  
 6th  
 8th  
 8th  
 15th  
 21st  
 29th  
 31st  
 31st

Like God the  
 Father, we  
 celebrate the day  
 you were  
 born!

*If we don't have  
 you or one of your  
 loved ones on our  
 birthday list, and  
 you would like to be  
 included, please  
 email Angela or the  
 church and let us  
 know.*



**Please pray for our at  
 home Friends**  
**Janet Lafferty**



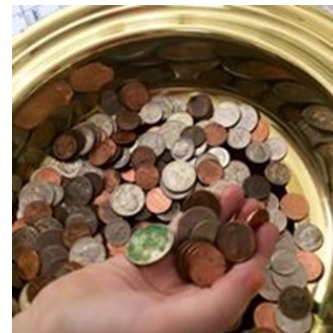
**Deadline for January**

**Potwin Post is December 20\***

*Please email your submissions to Angela Juarez  
 arp0371@gmail.com or potwinchurch@att.net.*

***\*Any submissions received after the  
 deadline WILL NOT be included in  
 the next Potwin Post. No exceptions.***

**Loose Coin Offering**



**DECEMBER  
 Christmas Joy Offering**

The Christmas Joy Offering is the last of the 4 national church offerings that we contribute to each year. A gift to the Christmas Joy Offering helps provide financial assistance to current and former church workers and missionaries and their families and also helps to provide scholarships to students so that they might attend Presbyterian-related racial ethnic colleges and schools.



## Retirement Celebration for Sue Ann Seel

On Sunday December 29th our beloved pastor of the last almost 15 years, Sue Ann Seel, is retiring and moving on to the next chapter of her life. We cordially invite you to come and celebrate with us at 10:00 am for a special worship service and after worship at 11:45 to participate in a time of joy and fellowship as we remember our time together with her and give her a hearty send off to whatever God has in store for her.

**When:** Sunday, December 29th 10:00 –11:00 for worship, 11:45 –2:00 for the celebration.

(dinner served starting around 11:45, presentations and speakers starting around 12:20)

**Where:** Potwin Presbyterian Church  
400 SW Washburn

**RSVP:** 785-608-0002 or [yoda66675@gmail.com](mailto:yoda66675@gmail.com)

You may bring or send gift cards and well wishes in advance to the church, attention Angela or Linda



# **YOU'RE INVITED!!!!**



**WHAT: POTWIN CHURCH ANNUAL COOKIE WALK**

**WHERE: 400 SW WASHBURN AVE  
IN THE ABBEY ROOM**

**WHEN: SATURDAY DECEMBER 14, 2024  
9:00AM TO 1:00PM  
(UNLESS WE SELL OUT SOONER)**

All baked goods are sold by the pound. These make great gifts this time of year and can come in handy when you're hosting guests or if you just want to treat yourself. All proceeds go to fund Youth Scholarships at Potwin Presbyterian Church. We can't wait to see you!!!!



# Doorstep Christmas Project ~ 2024



Doorstep is adopting 260 households with 800+ individuals from the Christmas Bureau again this year. We need your help to make Christmas bright for these families and individuals.

**We still need the following NEW items:** (Needed by 12/10/24)

## **Household Items:**

- ◆ Sauce Pans, Dutch Ovens & Griddles
- ◆ Kitchen Utensil Sets
- ◆ Kitchen Food Storage Sets
- ◆ Laundry Baskets & Cleaning Supplies (glass, all-purpose, toilet, micro-towels, dish soap)
- ◆ Queen & King Sheet Sets (darker colors)



## **Toys, Teens & Gifts:**

- ◆ Learning Toys ex: Vtech
- ◆ Basketballs & Footballs
- ◆ Teen Books ~ Fantasies
- ◆ Family Board Games
- ◆ Dominoes & Card Games
- ◆ Canvases (Value Packs)
- ◆ Paints & Brushes
- ◆ Ear Buds & Headphones

## **Women's Gifts:**

- ◆ Candles
- ◆ Nail Sets
- ◆ Body Care Sets (Body Wash, Lotion, Spray)

## **Men's Gifts:**

- ◆ Wallets
- ◆ Tool Sets
- ◆ Body Care Sets (Axe, Adidas, Old Spice)

## **Money for Gift Cards & Food**

**Visit Doorstep's Walmart Christmas Registry:**

<https://bit.ly/doorstepchristmas2024>

Purchase gifts directly from our registry!

**Visit Doorstep's Amazon Wish List:**

<https://a.co/ff4EokG>

Purchase gifts directly from our list!

## **Volunteer Opportunities:**

**Tuesday, December 17<sup>th</sup>** ~ Opportunities from 8:30am – 12:30pm and 12:30pm – 5:30pm. (Lunch provided)

**Wednesday, December 18<sup>th</sup>** ~ Opportunities available from: 8:30am – 1:30pm, 1:30pm – 4:30pm and 4:30pm - 7:30pm. (Lunch & Dinner provided)

**Thursday, December 19<sup>th</sup>** ~ Opportunities available from 8:30am – 12:30pm and 12:30pm – 5:30pm. (Lunch provided)

**Call Doorstep (785) 357-5341 to sign up & help during distribution week!**



Doorstep is located at 1119 SW 10th, 66604 (10th & Buchanan).  
Christmas Donation hours are Monday - Friday, 9am - 2pm thru Dec. 13th.

You can mail your monetary donations, or use our website:  
DoorstepTopeka.org under the Donate Tab.

# NEWS FROM DOORSTEP

For many the month of December is about the holidays, gathering with friends and family, decorating, baking, and getting gifts ready to share with our loved ones. At Doorstep, we have been thinking about and planning for our Christmas Adoption Project for months, and now it is time to make the holiday brighter for the 800+ individuals we have adopted from the Christmas Bureau this year! Each household we adopt will receive a food order, health kit, blanket/quilt, a household item, gifts, games and toys (children), school supplies if appropriate, and a \$20 gift card per person in the household. We have some volunteer opportunities available this year! (See Below)

**Current Needs for Christmas:** Gifts needed by December 9<sup>th</sup> are:

- Toys & Teens:** Nerf Guns, Legos Toys, Puzzles, learning toys like Vtech, Basketball, Footballs, Headphones, Earbuds, Family Board Games, Paints, Brushes & Canvases,
  - Gift sets for Men:** (Axe, Old Spice & Adidas), Tool Sets, Wallets
  - Gift sets for Women:** (body wash, lotion & spray), nail sets, candles, bath bombs
  - Household Items:** Queen & King size sheet sets – darker colors, Kitchen Utensil Sets, Saucepans, Griddles, Food Storage Sets, Cleaning Supplies
- These items should be **NEW** for Christmas.

Doorstep has set up a gift registry at Walmart.com and a Wish List with Amazon.com with items we need for our adopted families. You can search on either site and pick gifts to have sent directly to Doorstep, or yourself to bring to us by December 9<sup>th</sup>.

We also need monetary donations for the gift cards, food, etc. which will total \$40,000 or more. You can mail a check or go to our website ([www.doorsteptopeka.org](http://www.doorsteptopeka.org)) to donate by credit card.

Please note your member congregation with your donation, and don't forget your year-end, tax-deductible donations!

**Please note the following dates in December:**

**NO DONATIONS** of used clothing or household items will be accepted **Nov. 27th – Dec. 27th**.

Doorstep will be **CLOSED FOR ALL SERVICES AND DONATIONS** December 16<sup>th</sup> – 20<sup>th</sup>.

**Doorstep Holiday Hours:**

- Closed** from Noon on December 23<sup>rd</sup> through December 26<sup>th</sup> & January 1<sup>st</sup>.
- Open for **donations only** December 27<sup>th</sup> – 31<sup>st</sup>, January 2<sup>nd</sup>, 9am-2pm.
- Closed for **ALL services** December 27<sup>th</sup> – January 2<sup>nd</sup> for year-end wrap-up.
- Resume normal operation on Friday, January 3, 2025.

***Merry Christmas & Happy Holidays from the Staff at Doorstep!***

## Doorstep Needs List

### Clothing Room Needs: (Gently Used, Not New)

- Men's Underwear, Sock, Shoes & Belts ~ All Sizes
- Men's Jeans & T-shirts, Polo/collared & Dress Shirts ~ All Sizes
- Kids & Teens (Boys & Girls) – Jeans, Pants, Sweats & Hoodies ~ All Sizes
- Women's Bras, Underwear, Leggings & Jeggings ~ All Sizes
- Diapers ~ Sizes 5 & 6
- Sheet Sets ~ Twin, Queen & King
- Blankets & Comforters ~ All Sizes
- Washcloths & Hand Towels
- Pots & Pans
- Toasters, Blenders, Hand Can Openers & Crockpots

### Donations Accepted:

Monday – Friday  
9am – 2pm

1119 SW 10<sup>th</sup> Ave  
(10<sup>th</sup> & Buchanan)  
Use the South Door

### Food Room Needs:

- |   |                                       |             |
|---|---------------------------------------|-------------|
| Peanut Butter (not large jars)                                      | Progresso & Chunky Soups              | Jelly       |
| Canned Vegetables ~ All Types<br>(Green Beans, Corn, Peas, Carrots) | Canned Beans<br>(Pinto, Black, Chili) | Tuna        |
| Canned Tomatoes   | Vegetable Soup                        | Ramen       |
| Chicken Noodle Soup   | Pancake Syrup                         | Saltines    |
| Dry Pinto Beans – 1lb.  | Pork / Baked Beans                    | Egg Noodles |

### Health Kit Items Needed for Christmas Families: (260 Kits Total)

We need to have our kits made up in November and we are starting with zero inventory this year! Ideally, we need the following **Full Size Personal Hygiene Items** by November 12<sup>th</sup> to start assembling kits: The total quantity needed is listed after the item.

- |   |  |
|---|--|
| Shampoo + Conditioner (2 in 1) - <u>173</u> | Shampoo and Conditioner – <u>114 each</u>          |
| Bar Soap – <u>466 bars</u>                  | Body Wash - <u>27</u>                              |
| Toothpaste - <u>362</u>                     | Deodorant - <u>298</u>                             |
| Brushes & Combs – <u>38 &amp; 379</u>       | Toothbrushes (singles or small packs) - <u>821</u> |
| Bath & Hand Towels (New) – <u>288 each</u>  | Washcloths (New) – <u>396</u>                      |





## TOPEKA RESCUE MISSION NEEDS LIST

Donations can be brought to the Distribution Center at 401 NW Norris, Monday—Friday 8:00AM to 3:45PM. To speak with our Distribution Center, please call (785)357-4285.

### **CHRISTMAS NEEDS LIST** (All items used for Christmas Distribution must be NEW.)

Towels	Sheets (all sizes)	Blankets	Men's Gloves	Pots & Pans
Wallets & Purses	Backpacks	Backpacks	Crockpots	Can Openers
Coffee Pots	Toasters	Toiletries	Body Care Set	Bathrobes
Earbuds	KC Chiefs Items	New Coats	Women's Socks	
Men's & Women's clothing sizes 2X-5X				

### **DISTRIBUTION CENTER NEEDS**

Canned Proteins (Tuna, Chicken, Sloppy Joe, Beans, etc.)	Men's Jeans Size 30-40
Canned Fruit	Baby Diapers Size 5 & 6
Spaghetti-O's	Baby Toiletries (Lotion, Shampoo, etc.)
Men's Underwear M, L, XL	Men's & Women's Deodorant
T-Shirts 3X-4X	Ibuprofen, Tylenol, Cough Drops, Tums

### **KITCHEN NEEDS**

3 compartment to-go containers	Cutlery packs with napkin, salt, & pepper
Snacks for Sack Lunches	#10 cans of vegetables
Aluminum foil pans with lids	

**MAP NEEDS**—The TRM/Valeo Mobile Shower Access for the homeless provides a hot shower, clean clothes, food & beverage, mental health screening, health services for pets, city ID services, and many other services. They are deployed every Tuesday and Thursday at a scheduled location and operate from 8AM to 3PM. Current MAP needs are travel size items of the following:

Lotion, Body Wash, Shampoo, Conditioner, Razor Kits, Toothpaste, & Deodorant.

Also needed are: Women's underwear size small (4-6), Men's underwear sizes 30-36, Men's jeans sizes 30-36, Sleeping bags, & Blankets.

*(Mobile Access Partnership needs list items can be purchased on Amazon and shipped directly to TRM using the link below.)*

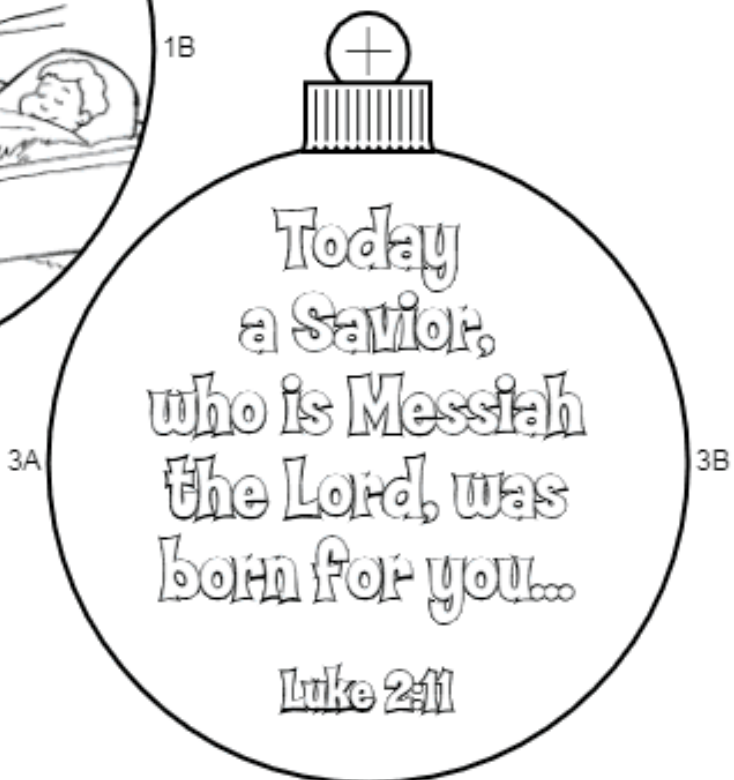
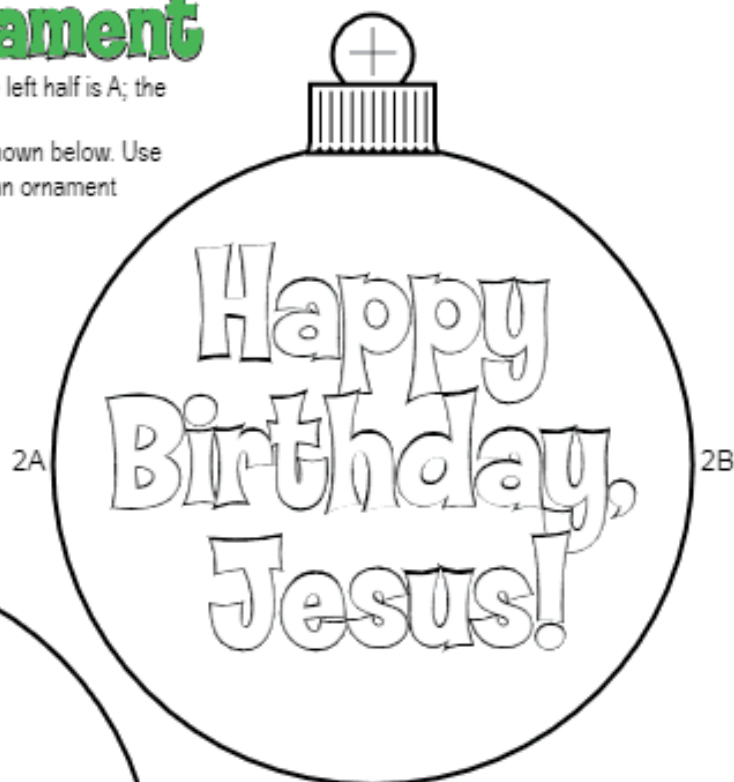
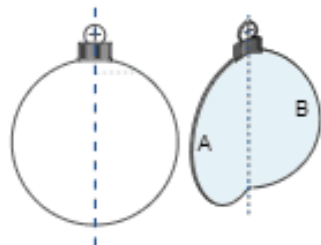
[www.trmonline.org/needslist](http://www.trmonline.org/needslist)

Visit the link below to purchase items from the TRM Amazon Wish List.

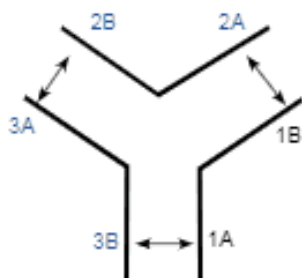
[https://www.amazon.com/hz/wishlist/ls/O6BQ8QXTPLGA/ref=hz\\_ls\\_biz\\_ex](https://www.amazon.com/hz/wishlist/ls/O6BQ8QXTPLGA/ref=hz_ls_biz_ex)

## Christmas Ornament

1. Cut out the three pieces and fold each in half. The left half is A; the right half is B.
2. Glue the backs of the folded halves together as shown below. Use a hole punch to make a hole in the top ring. Use an ornament hanger or string to hang the ornament.



1. Glue the back of "1B" to the back of "2A."
2. Glue the back of "2B" to the back of "3A."
3. Glue the back of "3B" to the back of "1A."



# EVENTS & ANNOUNCEMENTS

## CHURCH OFFICE CLOSURE DATES

The church office will be closed Wednesday December 25th in observance of Christmas Day and also on Wednesday January 1st in observance of New Years Day. Any messages will be returned when we return to the office.

## DATES TO REMEMBER & LOOSE COIN INFO

### ***December—Loose Coin Partner: Christmas Joy Offering***

The Christmas Joy Offering is the last of the 4 national church offerings that we contribute to each year. A gift to the Christmas Joy Offering helps provide financial assistance to current and former church workers and missionaries and their families and also helps to provide scholarships to students so that they might attend Presbyterian-related racial ethnic colleges and schools.

***Sunday December 1st:*** Communion Sunday; Hanging of the Greens after worship

***Every Tuesday in December:*** Bell Choir rehearsal at 6:00PM. See Gwen Jones for more info if you are interested in participating.

***Wednesday December 11th:*** Blue Christmas Worship Service at First Presbyterian Church 6:00PM

***Saturday December 14th:*** Annual Cookie Walk (see flyer on pg 5 for details)

***Sunday December 15th:*** NO WORSHIP AT PPC!!! Several of our members are participating in the Christmas Cantata at Westside Baptist Church. Please attend this event/worship at 10:30AM.

***Tuesday December 24th:*** Christmas Eve Worship Service 6:30PM. More details to follow.

***Wednesday December 25th:*** Christmas Day—Church Office closed

***Sunday December 29th:*** Retirement Celebration for Pastor Sue Ann Seel ( see flyer on pg 4 for details)

## COMMUNION SERVER & COFFEE HOUSE CHURCH

We are in need of a Communion Server for **Sunday December 1st**. Please use the sign up sheet on the bulletin board in the Sanctuary or contact the church office so we can put your name on the list. Thank you! **Coffee House Church** is Sunday December 22nd downstairs in Fellowship Hall. It will be potluck style. Please bring your favorite breakfast or brunch treat to share. All are welcome and encouraged to join us even if you are unable to bring anything.

## BLESSING BOX & LITTLE LIBRARY

Please help us continue helping our neighbors in need. Our Blessing Box and Little Library are being constantly refilled to meet needs in our neighborhood. Many in our neighborhood have been assisting us in this effort. Thanks to all who contribute to these local missions. Remember our blessing box when you shop as it is always in need of items. You may bring the items into the church or place them in the box itself.

## INCLEMENT WEATHER POLICY

If weather conditions warrant the cancellation of worship services, you will be notified via email, Facebook, and on the TV stations hopefully by 10PM Saturday evening. If weather happens overnight, it will be posted to these outlets by 7AM Sunday morning. On days that USD 501 closes school, please consider the church office to be closed as well. In those instances, if you have a need that requires immediate attention, please contact the person you need to speak with directly. Church email will still be checked regularly and phone messages will not be checked until someone returns to the office.



# December 2024



Sun	Mon	Tue	Wed	Thu	Fri	Sat
1 <b>Communion Server</b> <hr/> <b>Hanging of the Greens after worship</b>	2	3  Happy Birthday Angi Workman	4	5	6  Happy Birthday Marley Abbey	7
8  Happy Birthday Mark Works John Works	9	10	11	12	13	14 <b>Cookie Walk 9:00AM— 1:00PM</b>
15 <b>Christmas Cantata @ Westside Baptist 10:30AM. No worship at PPC.</b>  Happy Birthday Falan Workman	16	17	18	19	20	21  Happy Birthday Emma Hutchison
22 <b>Coffee House Church</b>	23	24 <b>Christmas Eve Worship Service 6:30PM</b> 	25 <b>Merry Christmas</b> 	26	27	28
29 <b>Retirement Party for Pastor Sue Ann Seel 11:45AM—2:00PM</b>  Happy Birthday Dustin Chermok	30	31 <b>New Year's Eve</b>  Happy Birthday Sharon Bayless Mary Charity		<b>Sunday Fellowship 9:30AM Sunday Worship 10:00AM</b>	<b>Bell Choir Rehearsal every Tuesday at 6:00PM unless otherwise noted.</b>	<b>Church office will be closed Christmas Day 12/25/24 and New Year's Day 1/1/25.</b>

Visit us online at [www.potwinpres.org](http://www.potwinpres.org) or find us on Facebook at <https://www.facebook.com/PotwinChurch>.  
You can also find us on YouTube at <https://www.youtube.com/@potwinpresbyterianchurchto7915>.

**DEC. 2024 POTWIN POST**  
**Potwin Presbyterian Church**  
**400 SW Washburn Ave.**  
**Topeka, KS 66606**  
**(785) 235-1311**

Potwin Presbyterian Church is a safe and sacred place to worship God where Christ's love is revealed through actively and joyfully sharing, caring, and giving to others in our congregation, community, and world.

You can find us online at  
[www.potwinpres.org](http://www.potwinpres.org) & on Facebook at  
<https://www.facebook.com/PotwinChurch>.

You can reach us by email at  
[potwinchurch@att.net](mailto:potwinchurch@att.net)

